

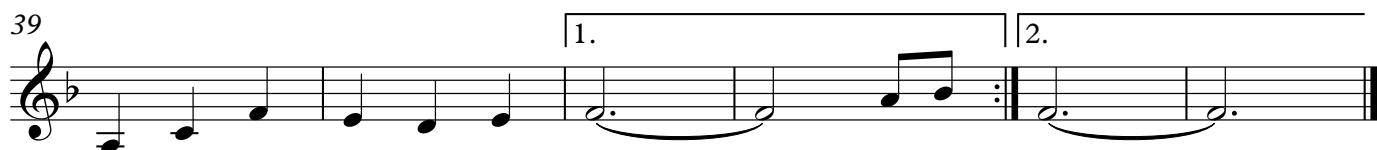
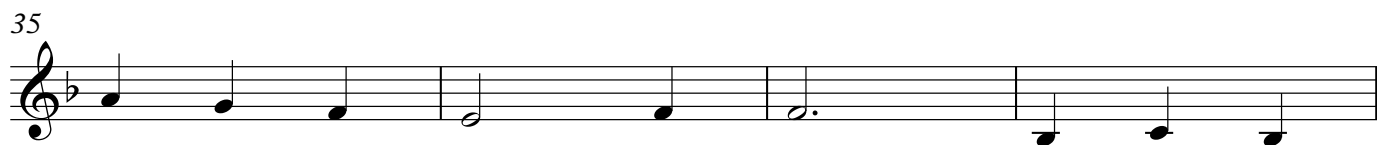
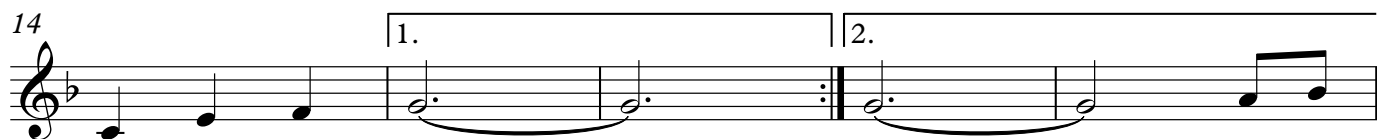
# Inisheer

Thomas Walsh

The musical score for 'Inisheer' is written in treble clef, 3/4 time, with a key signature of one sharp (F#). The piece consists of six staves of music. The first staff contains measures 1-5. The second staff begins at measure 6 and includes a first ending (marked '1.') and a second ending (marked '2.'). The third staff contains measures 10-13. The fourth staff contains measures 14-17. The fifth staff contains measures 18-21. The sixth staff contains measures 22-25 and concludes with a double bar line.

# Johsefins Dopvals

Roger Tallroth



# La Cinq-Cents

Marc Péronelle

♩ = 130



# Retour de Montagnac

Frédéric Paris

